



FIRST PRESBYTERIAN CHURCH NEWSLETTER

Albemarle, North Carolina

Reverend Joel Lynn, Pastor

Dr. Frank Poolos, Director of Music

Michael Rowland, Organist

Jane Snyder, Director of Fellowship & Congregational Care

Shawn Graeff, Director of Facilities Maintenance

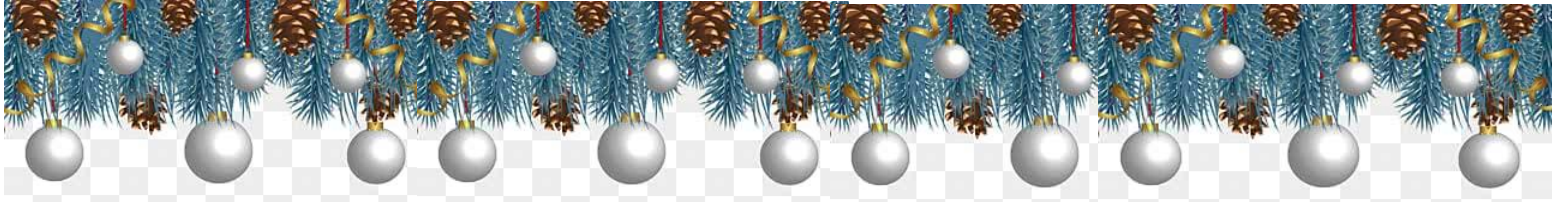
Kyle Lambert, Office Manager

Beth Poolos, Secretary

Church Office: (704) 982-2722

Website: www.fpcalbemarle.org

E-mail: klambert@fpcalbemarle.org



December 2025

From the Pastor

In our Back to the Basics adult education class, we have been taking time to explore the history and beliefs of various world religions and Christian denominations. Often this has led to us also making various critiques as to what reasons we might have to believe differently or how certain beliefs seem incompatible with certain Bible verses. But we're also taking the time to criticize parts of our own denomination's history and beliefs. We are not the one exception of being the one group of people who always got everything right.

As Christmas approaches, one of our favorite times of the year, it is worth noting an oft forgotten part of our history: that, for a long time, Christmas used to be a no-no in Presbyterian circles. In large part this was due to the holiday being deemed "too Catholic". In the Reformation, Protestants had many legitimate complaints about some Catholic traditions, but sometimes they threw the baby out with the bathwater. They saw Christmas as just another man-made tradition to get rid of. For nowhere in the Bible does it say to celebrate Christmas, and it may not have been celebrated in the church until the 300s. Even the word Christmas, from Christ-mass, came under fire at times as Protestants rejected the idea of the mass due to different theological understandings of the Eucharist/Lord's Supper.

They also saw Christmas celebrations as excessive in contrast to their "Protestant work ethic" values of discipline and frugality. Christmas had, in their minds, become a long period of sloth. There were celebrations for all 12 days of Christmas. And at times it became a period of debauchery where people drank excessively and engaged in vices like gambling with card and dice games. Instead of opting for tamer and holier celebrations, they just did away with Christmas in its entirety. Presbyterian Scotland made Christmas celebrations illegal in 1640, not freely celebrated again until 1958. Puritan England banned Christmas under Oliver Cromwell's reign from 1644-1660. Presbyterians in America didn't start celebrating Christmas until the 1800s, and didn't celebrate Advent until the mid-1900s. Even carols were outlawed at times. But Christmas carols may have the most biblical support out of any of our modern Christmas traditions. Four times in just the first two chapters of Luke we see people breaking out into song as a joyful response to the birth of Jesus: Mary, Zechariah, the angelic chorus, and Simeon.

From our modern perspective, where Christmas is so universally beloved, a ban on Christmas seems almost unthinkable. The joy and celebration over the birth of Christ is something we would only ever think to encourage, never dissuade.

We Presbyterians have changed a lot over the years, but one thing has stayed the same, we still don't have everything right. Each generation we gain new virtues and new vices. There is never a clear straight line of progress. We are the church once reformed and always reforming according to the word of God. We must always be reassessing our beliefs and traditions out of the humility that we could be wrong about something.

But thanks be to God that we are no longer among the scrooges. Far from it! As we host the Community Christmas Dinner this year, we seek to spread Christmas cheer and goodwill with those who need it most. Who knows if out there there is someone like a Bob Cratchit or a Tiny Tim who stands to be blessed.

Pastor Joel



FLOWERS

First Presbyterian provides flowers for worship on some Sundays but is dependent on members for flowers on other Sundays. Members who donate flowers may do so in honor of or memory of others. We obtain flowers from Blooms Royale florist on Main Street, but the choice of florist is up to you. You may also supply flowers from your garden. Please contact flower coordinator Mary Louise Sawyer 704-986-6320 or jameshardinsawyer@gmail.com if you wish to donate flowers for worship.



Sunday, December 7	Second Sunday of Advent/Joy Gift Program and Luncheon
Sunday, December 14	Third Sunday of Advent/ Lessons and Carols Presented by Chancel Choir
Sunday, December 21	Fourth Sunday of Advent
Wednesday, December 24	Christmas Eve Candlelight Worship
Sunday, December 28	First Sunday of Christmas

10 CENTS A MEAL

Ten-Cents-A-Meal

We will receive the Ten-Cents-A-Meal offering for hunger on December 7. This monthly offering is used by the Presbytery of Charlotte to fund hunger programs and agencies (including SCCM) throughout the presbytery.



The JOY Gift Offering
will be on Sunday, December 7.



Please make plans to join us for a covered dish luncheon following worship on Sunday, December 7- Joy Gift Sunday.

Sunday December 7th



Following worship we will gather around the table for a covered dish luncheon in the gym.
Please bring a dish to share!
Also make plans to come shop our annual Christmas Kitchen in the Pit Stop!



***Angels We Have Heard on High
Presented by the Chancel Choir
of First Presbyterian Church***

Sunday, December 14...11:00 a.m. Worship Service

The 2025 Advent Choral Service will continue our tradition of tracing the Biblical account of the birth of Christ using scripture followed by contemplative readings. The choir, directed by Dr. Frank Poolos will be accompanied by organist Michael Rowland, the Piedmont Triad String Quartet, and percussionist, Parker Cox.



**CHRISTMAS EVE WORSHIP ON WEDNESDAY, DECEMBER 24
AT 5:30 P.M. – Musical prelude begins 5:00 pm**

Carols and candlelight will mark the evening as we celebrate the birth of Christ.

Christmas Candlelighting Service

The musical prelude begins at 5:00 p.m. Highlights will include organ, vocal, and instrumental music. ***The traditional candlelight service begins at 5:30 p.m.*** Worship includes a story for the children, the Sacrament of the Lord's Supper, music by the adult choir, sharing the light of Christ, and traditional carol singing.

NEWS *and* NOTES

You Are Invited To The

Annual Community Christmas Dinner

Enjoy a warm and delicious
meal, fellowship, and sharing
around the same table.

12/25/2025

11 AM - 1 PM
DINE IN ONLY

**First Presbyterian Church,
Downtown Albemarle**

Come and meet us at the Children's Craft Corner
and for the Music of Christmas!

Come, on this most holy of days, if your extended
family is elsewhere, your home is too quiet, or
you have no other special place to be!!

*Come and let's participate together in
a spirit of love, acceptance, fellowship
and friendship....and joy!!*



You may still give donations to the Community Christmas Dinner (in the memo of your check designate "Community Christmas Dinner").

NEWS *and* NOTES

Advent Afternoon For Kids Let's get ready for Christmas!!!



Children in grades K-5th are invited to gather for an "Advent Afternoon" on Sunday, December 7 from noon-2:30 pm. Come prepare for the coming of Christ as we create, laugh, & move through fun activities celebrating this Advent season. Make and take some projects that will keep you focused on hope, peace, joy and love!





CONGRATULATIONS TO THE NEW PARENTS AND GRANDPARENTS

Skeet and Elizabeth Ayscue became grandparents on November 9, 2025. Peter McNair Ayscue was born to Spencer and Megan Ayscue on Nov. 9, at 4:45 in Winston Salem, NC. The delighted aunt of course, is Rebekah Ayscue, of Clemmons, NC. Love, prayers and Congratulations to the whole crew!

Mr. and Mrs. Skeet Ayscue
PO Box 846
Montreat, NC 28757

Mr. and Mrs. Spencer Ayscue
624 Laurel Street
Winston Salem, NC 27101



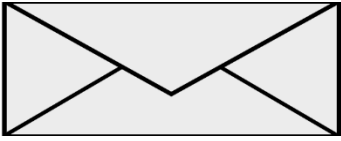
New info for Stan Scheer

Stanley Scheer
728 Klumac Road, #331-C
Salisbury, NC 28144

Email: stansnc@protonmail.com
Cell: 704-322-0455



NEWS *and* NOTES



2026 OFFERING ENVELOPES

Beginning Sunday, November 30, Offering Envelopes for 2026 will be available for pickup in the common area right outside the church office.

NOTE: Envelope numbers change every year. Remember...DO NOT USE these envelopes until January of 2026. If you have a bank draft and the bank has been instructed to include your envelope number on the check, be sure to update the new envelope number with the bank prior to January 1, 2026.

If you give online, please make sure that you still PICK UP your 2026 envelopes. These books contain the Faith on the Fifth envelopes and Special Offering Envelopes. If you do not pick them up by January 31 they will be discarded.

Please see Kyle for any of the following:

If you are a youth or you have a child that would like to have envelopes

If you do not find your envelopes or have lost your envelopes.

FINANCIAL YEAR END CLOSING



The church financial books will close at noon on December 31. Any contributions made after will be deposited in 2026. Please make sure that contributions being mailed are addressed to First Presbyterian Church, PO Box 1578, Albemarle, NC 28002. The office suggests contributions be mailed no later than December 14, due to the Christmas Holiday mail. If you are transferring stock, please do so by

December 14 to insure you get credit for that transfer, you must contact Kyle Lambert and give her the date the transfer was made.

****IMPORTANT NOTE****

JOY GIFT OFFERING ENVELOPE 2025

This year (2025) Joy Gift is December 7, 2025. Your Joy Gift offering envelope for 2025 is dated December 14. This is incorrect. Please use the incorrect envelope to contribute to the Joy Gift offering, but turn it in/put it in the offering plate on **Joy Gift Sunday, December 7.**

In an effort to keep the prayer list updated, we would appreciate your help. Please notify the church office (704-982-2722 or bpoolos@fpcalbemarle.org) of changes. Thank you.



Do you ever see a name on the prayer list and think, *Now who is that?* Or forget what the relationship is? You are not alone as many folks have asked for help with this. The *Prayer List Connection* will refresh all our memories. We will be deleting all names on this list after this month to make updates. If you would like to put someone on the list, you will need to first have permission from the person you are adding, contact the church office and let us know who you would like added. Following next month, we will keep them on the newsletter's *Prayer List Connection* for as long as we are requested to do so. Current critical prayer concerns will be added weekly to the prayer list in the bulletin.

Friends of the Congregation:

David & Marsha Bell, friends of Debbie & John Hahn; David has cancer.
Mikayla Hege, friend of Elizabeth Bryson.
Molly Amelia Lowder, low immunity health concerns.
Taylor Blalock Mauldin, nurse at Atrium-Stanly; cancer.
Maddie McRae, daughter of Renee & Keith McRae; diagnosis & treatment for a brain tumor.
Bryanna Medlin, Hodgkins Lymphoma.
Tim Rodgers, cancer.
Garin Stepp, Duchenne Muscular Dystrophy.
Patsy McLaurin, mother of Lee McLaurin.
Dr. Mike Dearstyne, brother of Holly Norwood.
Elizabeth Cox, niece of Elizabeth Wilson.
Kim Roberts, cancer.
Atticus Hampton, grandson of Chris & Barbara Whitley.
Madelyn Jones
Annie Poolos, sister-in-law of Frank & Beth Poolos.
Kelly Jordan, daughter of Nancy Sullivan, friend of congregation.
Chuck Burch, friend of Ruth Goodwin.
Mamie Rogers Morton, daughter of Art & Sandy Rogers, undergoing treatment for bladder cancer.
Jacob Rodger, friend of congregation in accident.

Members of the Congregation:

Anita Gower
Polly Moose
Rita Morgan
Shannon Newport
Marlene Sanges
Mary Green
Gus Holbrook
Leslie Kinley
Ann Byrd
Anne Montgomery
John Montgomery
Tommy Murrell
Frankie Palmer
Ruth Goodwin

Sympathy

The family of Nancy Lowder who passed on November 19, 2025



DECEMBER

Birthdays

- | | |
|--------------------|-----------------------|
| 01- Steve Cumming | 13- Tom Norwood |
| Ruth Goodwin | 14- Greg Jones |
| Catherine Moeller | 18- Katie Carpenter |
| 02- Taylor Barbee | Mary Green |
| Lynn White | |
| 03- Glenn Miller | 20- Anna Henkenjohann |
| 04- Kate Gibson | Morgan Smet |
| 05- Thora Kilde | 21- Emily Andrew |
| Nathan Sanges | 23- Bill Jolly |
| 06- Scott Bullard | 25- Bob Sasser |
| 08- Pam Morgan | 26- Connie Robinson |
| Robert McIntyre | 27- Duncan Bryson |
| 10- Terry Morgan | 29- Campbell Bullard |
| Bill Pickler | 30- Sally Grantier |
| Seth Richards | John Montgomery |
| 11- Mackenzie Smet | 31- Adrienne Robinson |



DECEMBER

Anniversaries

- | | |
|----------------------------|----------------------------|
| 04- Jack & Penny Morton | 21- Gerald & Lynn Poplin |
| 07- Charlie & Kelly Lentz | 23- Craig & Teresa Taylor |
| 10- Terry & Pam Morgan | 26- John & Anne Montgomery |
| 15- Ronnie & Sarah Michael | 27- Brad & Jane Boone |
| Chris & Barbara Whitley | 28- Ben & Shannon Lisk |



ANNUAL CHRISTMAS KITCHEN

FUNDRAISER

FOR MONTREAT YOUTH CONFERENCE 2026

Cakes, pies, cookies, candy, appetizers, casseroles, homemade canned items, soups, breads, muffins, etc. will be available for purchase on Sunday, December 7 from 9:30 to 1:00 in the church pit stop. If you would like to donate homemade items for the sale, please let the church office know by calling or emailing what you would like to donate, or signing up on the sheet located in the church office. If baking or cooking does not bring you joy, maybe you would like to make a cash or check donation so the youth can go shop for ingredients to make items together here at the church. We love Christmas Kitchen time of the year at FPC and know you do too! Items can be turned in at any time before Saturday, December 6! Please indicate if the item needs to be frozen. And don't forget to put heating/baking instructions on your item. If you need labels to write on, we have some in the church kitchen marked Christmas Kitchen.

MONTREAT YOUTH CONFERENCE

JULY 12 – JULY 18

Youth in 9th through 12th interested in going to the 2026 Montreat Youth Conference July 12- 18, **must sign up and make their \$100 deposit no later than January 31, 2026.** All deposits must be made to the church office. On Sundays, the deposit can be left in the slot on the church office door (Please use a sealed envelope). Payments must be made in cash or check or by credit card (Youth Retreats) on the church website. If you have questions call the church office.

January Newsletter Deadline

Tuesday, December 16.

Early submissions are always welcome!

If you type your items in Microsoft Word, please email
them as an attachment to:
bpoolos@fpcalbemarle.org.

NewsLetter
DEADLine



The Prayer Shawl Ministry , will be meet on Wednesday, December 3 at 1:30 p.m. in the Parlor.
Please contact Peggy Finley at 704-779-8320 or maf447@windstream.net if you have questions.

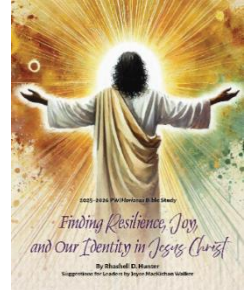


Circle will meet at 1:00 pm in the Pit Stop on
Wednesday December 10 ,2025

We will study lesson 3 of our study book

“Finding Resilience, Joy, and Our Identity in Jesus Christ”

Contact Ann Duckwall @ 704-983-3498 for more information.





Deeper Relationships

MONDAY LUNCH AND LEARN

FORMING DEEPER RELATIONSHIPS WITH OTHERS AND WITH GOD! In our fast paced culture, the notion of staying awhile has grown foreign. Sometimes slowing down and staying awhile is exactly what we need. Let's explore ways to form deep relationships with others which will help us form a deeper relationship with God. Please join Ann Crutchfield, Jane Hartsell, Gayle Russell and Jane Snyder on **Mondays at church at NOON** in the Session Room across from the office. We will provide mixed greens and drinks. All you need to bring is a salad topping. It is not necessary for you to attend all the classes to get the benefits of the class and the fellowship. RSVP to Jane Snyder at jsnyder@fpcalbemarle.org or 704-438-3358.

We will meet December 1, 8 and 15- then restart January 5.



**FPC will be feeding the Community
Inn On Friday, December 5.**

If interested in helping, please contact
Ruth Cotton at 704-942-1381 or
hugawolf@hotmail.com.

We will feed next month on January 2nd .

Prayer & Bible Study Opportunities



YOUNG ADULT SUNDAY SCHOOL CLASS

The Young Adult Sunday school class will be led by rotating leaders during Pastor Joel's family leave. It is a class for young adults ages 20 to 40! You are also welcome to join if you are actually older than 40 but don't feel it!- everyone is welcome! We are meeting at 9:30 a.m. in the old teen room next to the choir room. We would love to see you!



FEASTING ON THE WORD CLASS

Feasting on the word is an intergenerational Bible Study class that uses the denominational resource curriculum Feasting on the Word. The intent of the Feasting on the Word class will be to introduce and challenge us to understand biblical stories in new and creative ways and live our faith put through contemporary and dynamic Christianity. Congregational members of all ages are encouraged to attend. The weekly class discussions will have multiple discussion leaders. The class meets in the Old Session Room at 9:30 am on Sunday mornings. We would love to see you all!



The Wired Word Class meets on Sunday mornings at 9:45 a.m. in the Parlor to discuss current events and biblical scripture that relates to the news.

There is no "teaching". Rather it is a group discussion. We hope you will participate but you are also welcome to just listen to the thoughts of others. Importantly, there are no right or wrong answers. And, since the subject is different every week, it doesn't matter if you miss some Sundays. We hope you will give our class a try!

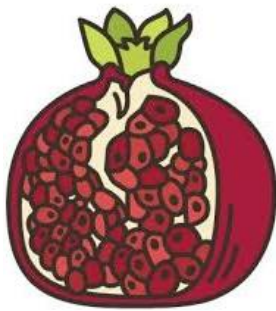


Adult Ed Class

Back to the (Not So Basic) Basics

This class will be on pause till Pastor Joel returns from paternity leave.

It will restart in early February on **Tuesdays, at 6:30 p.m. in the Pit Stop** as we dig deep into some of the basics of our faith.



Let's do
LUNCH

LUNCH OUT

**First Presbyterian Church Lunch Outing at
The Independent- 251 West Main Street- Albemarle
Friday, December 12 at 11:30 a.m.**

We will meet at the restaurant at 11:30 a.m.
Let Jane know if you can join us by texting or calling her at 704-438-3358 or
jsnyder@fpcalbemarle.org

FOOD PANTRY FOR SCCM

November 2025



Pantry Needs



Stanly
Community
Christian
Ministry

Stanly
Community
Christian
Ministry

Gluten Free Items
Baby Food
Crackers
Sugar
Kidney & Baked Beans
Various Condiments
Seasoning packets
Salt & Pepper
Personal Hygiene Items

Pineapple & Mixed fruit
Green Peas
Boxed Meals
Canned Meat
Dry Beans
ALL Soups
ALL Cream of Soups
Black Eyed Peas
Toothbrush & Toothpaste

HANDBELLS



If you are interested in playing in a handbell group, please
email or call/text Frank Poolos at
fpoolos@fpcalbemarle.org or 704-985-3115.

Expected rehearsal time would be 9:00 am on Sundays.
We are planning to start on Sunday January 11 in the choir room.





We began this year's meals in the Pit Stop and then moved into the gym. After considering feedback, we have decided to continue holding the meals in the Pit Stop with the Parlor available for overflow. Many of you have expressed that you enjoy the intimacy of the Pit Stop, and this also allows the gym to remain available for other activities. We look forward to seeing you there! If you would like to volunteer, please contact Jane Snyder. We need help on Wednesday mornings at 9:00 am with meal prep, as well as with clean-up after the meal.

**Meal prices: \$8.00-adult (not to exceed \$20-Family)
\$4.00 -children through grade 5.**



Menus for December: 3,10

FIRST WEDNESDAY: Beef, Noodles and Salad

SECOND WEDNESDAY: Brunswick Stew and Salad

THIRD WEDNESDAY: **NO MEAL**

FOURTH WEDNESDAY: **NO MEAL**

FIFTH WEDNESDAY: **NO MEAL**

* All meals include: Assorted Desserts Tea, Coffee, Water and Lemonade.



Thanks to all our MIDWEEK Meals Volunteers:

Linda Anderson, Ruth Cotton, Ann Crutchfield, Josh Davis, Ann Duckwall, Peggy Finley, Jim Hesley, Jennifer Hesley, Stephan and Leslie Kinley, Kyle and Danny Lambert, Chris Mabry, Ronnie and Sarah Michael, Gayle and Ned Russell, and Lee Snuggs.



CHRISTMAS and NEW YEARS OFFICE HOURS

The church office will be closed December 24, 25, 26.

December 29 & 30 open 9:00 to 5:00

December 31 open 9:00 to 5:00

Closed January 1

Reverse Advent Calendar - SCCM

Each day add an item to a box. After the holidays, donate the box to SCCM at 506 S. First St. in Albemarle.

- December 1 - Pancake Syrup
- December 2 - Coffee
- December 3 - Stuffing Mix
- December 4 - Canned Potatoes
- December 5 - Canned Chili
- December 6 - Canned Pineapple
- December 7 - Beanie Weenies
- December 8 - Canned Meat
- December 9 - Brownie/Cookie Mix
- December 10 - Jelly/Jam
- December 11 - Canned Sweet Potatoes/Yams
- December 12 - Cranberry Sauce
- December 13 - Canned Baked Beans
- December 14 - Box of Crackers
- December 15 - 2lb bag or less Sugar
- December 16 - Box of Oatmeal
- December 17 - Boxed Dinner Meals
- December 18 - 16oz Cooking Oil
- December 19 - Canned Soups
- December 20 - "Cream of" Soups
- December 21 - Canned Peas
- December 22 - Canned Greens
- December 23 - Canned Carrots
- December 24 - Pop Tarts

Stanly
Community
Christian
Ministry



FIRST PRESBYTERIAN CHURCH PRESENTS THE WINTER ART GALLERY EXHIBIT BY CENTRAL ELEMENTARY SCHOOL STUDENTS

We are so excited that Central Elementary School student work will be featured in the art gallery for the month of December! Thank you so much for supporting and encouraging our young artists at Central Elementary! The art is tempera paintings that were done using coffee filters, and then oil pastels added. This was for our school fundraiser with Art to remember and they are flowers showcasing pieces from 4th and 5th grade levels.

Billie Jean Snuggs teaches art at Central Elementary

**The congregation of First Presbyterian Church is invited
to meet the Central Elementary artists at the
Art Gallery Reception
on Wednesday, December 3 from 4:00 p.m.-5:30 p.m.
in the church common area.**



DECEMBER

Monday, December 1

Noon Lunch & Learn

Wednesday, December 3

6:45 am Men's Prayer Breakfast
1:30 pm Prayer Shawl meeting in Pit Stop
4 -5:30 pm Art Gallery Reception
5:30 pm Midweek Meal
6:15 pm Chancel Choir Rehearsal

Thursday, December 4

7:00 pm Stanly Community Band Concert
at Central Methodist Church

Friday, December 5

6:00 pm Meal for Community Inn

Sunday, December 7

2nd Sunday of Advent/Joy Gift/Christmas Kitchen

9:45 am Sunday School
9:45-10:30 am Christmas Kitchen
11:00 am *Worship
Noon Joy Gift Luncheon following worship
Advent Afternoon for Kids

Monday, December 8

Noon Lunch & Learn

Wednesday, December 10

6:45 am Men's Prayer Breakfast
1:00 pm Circle Five meeting
5:30 pm Midweek Meal
6:15 pm Chancel Choir Rehearsal with Strings

Friday, December 12

11:30 am Lunch Out at The Independent- Albemarle

Sunday, December 14

3rd Sunday of Advent/Lessons & Carols by the Chancel Choir

9:00 am Diaconate Meeting
9:45 am Sunday School
11:00 am *Worship

Monday, December 15

Noon Lunch & Learn

Wednesday, December 17

6:45 am Men's Prayer Breakfast
No NO Midweek Meal
6:15 pm Chancel Choir Rehearsal

Sunday, December 21

4th Sunday of Advent

8:30 am Session Meeting
9:45 am Sunday School
11:00 am *Worship

Wednesday, December 24

Christmas Eve/The Sacrament of the Lord's Supper

Church Office Closed

5:00 pm *Christmas Eve Musical Prelude
5:30 pm *Christmas Eve Candlelight Service

Thursday, December 25

Nativity of the Lord/Christmas Day/Community Christmas Dinner

Church Office Closed

11:00 am to 1:00 pm Community Christmas Dinner -
First Presbyterian Church

Sunday, December 28

1st Sunday of Christmas

9:45 am Sunday School
11:00 am *Worship

Monday, December 29

Church office hours 9 to 5

Tuesday, December 30

Church office hours 9 to 5

Wednesday, December 31

Church office hours 9 to noon

***childcare provided**



SANCTUARY POINSETTIAS

If you would like to contribute to the purchase of 10 ten-inch poinsettias as a Christmas memorial/honorarium, please make a check for \$10.00 payable to *First Presbyterian Church* and designate for poinsettias. **Please return the check along with the form below to the church office by noon Monday, December 8.** A complete list will appear in the bulletin on Sunday, December 15. **Following the Christmas Eve service on December 24, all 4 poinsettias will be delivered to four local nursing homes.**

SANCTUARY POINSETTIAS

Please print below the information exactly as it is to appear in the bulletin.

In memory of: _____

Given by: _____

In honor of: _____

Given by: _____

Due to space and guest musicians for the Christmas season, this year there will be only four large poinsettias in our church sanctuary at the pulpit area. We will of course continue to take memorial and honorariums to be printed in the Bulletin, but there will not be a poinsettia to take to any individual. This year the poinsettias will be delivered Christmas Eve night or Christmas day to Trinity Nursing Home(1) , Stanly Manor (1), Spring Arbor(1) , Bethany Woods (1).



THOSE WHO SERVE IN DECEMBER

Ushers: Anissa Chapman (captain), Chris Chapman, Kimball Chapman, Vaughn Folks,

Elder Greeters: Ronnie Michael, Emily Andrew

Acolytes:

December 7: TBD

December 14: TBD

December 21: TBD

December 24: TBD

December 28: TBD

Outside Ushers:

December 7: Tom Norwood, Jack Morton

December 14: Chris Chapman, Lee Snuggs

December 21: Ronnie Michael, Jim Marshall

December 28: Matt Carpenter, Danny Lambert

Streaming Coordinator:

December 7: TBD

December 14: TBD

December 21: TBD

December 28: TBD

Nursery for December:

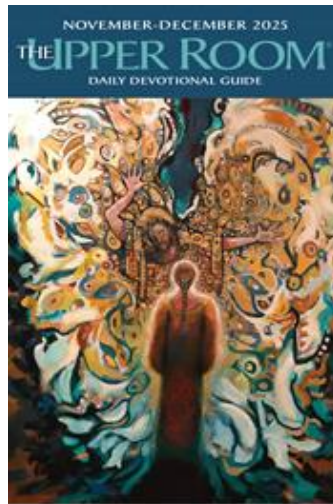
December 7: Bailey Mitchell

December 14: Bailey Mitchell

December 21: Bailey Mitchell

December 24: Peyton & Colby Hatley

December 28: Bailey Mitchell



THE UPPER ROOM DAILY DEVOTIONAL GUIDE

The Upper Room Daily Devotional Guide exists to:

- offer resources that encourage daily spiritual practice,
- call Christians to a life of living prayer,
- create meaningful, transformational experiences and studies for individuals, small groups, and congregations,
- help people grow deeper in love with God and neighbor,
- support churches in becoming centers of prayer and spiritual formation,
- inspire spiritual leaders to lead with a listening heart, and
- invite the “spiritually curious” to living waters.

The Upper Room devotional guide is available for your use. Daily readings will help focus your prayer and study.

The Upper Room can be found in the pit stop, the church office, and the narthex

Elders

Emily Andrew
Debbie Bennett
Keith Bryson
Ann Crutchfield
Peggy Finley
Kate Gibson
Mike King
Lee McLaurin
Ronnie Michael
Tom Norwood
Gayle Russell
James Sawyer

Deacons

Anissa Chapman
Vaughn Folks
Heather Hatley
Jim Hesley
John Palmer
Frank Poolos
Brett Richards
Billie Jean Snuggs
Debbie Wainwright

Church Website Address & Staff Email Addresses

Church Website Address:	www.fpcalbemarle.org
Church Email Address:	klambert@fpcalbemarle.org
Rev. Joel Lynn:	jlynn@fpcalbemarle.org
Kyle Lambert:	klambert@fpcalbemarle.org
Jane Snyder:	jsnyder@fpcalbemarle.org
Dr. Frank Poolos:	fpoolos@fpcalbemarle.org
Beth Poolos:	bpoolos@fpcalbemarle.org
